

>3S 300 D multiturn actuator

MODBUS RTU



x|active



> Drive types

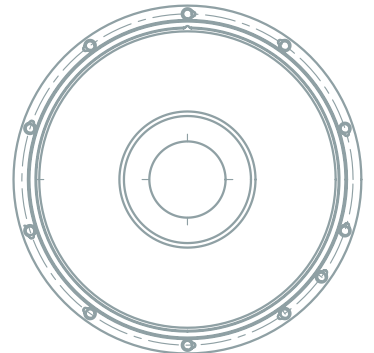
Type	Torque Min.	Torque Max.	Continuous torque in operating mode	Rotation Speed Min.	Rotation Speed Max.
	min.	max		min.	max.
300D-125	20	125	60	1	25
300D-60	10	60	35	2	50

> Actuator Data

Feature	Standard	Optional
Motor	Motor Variable-speed 24 V DC synchronous motor, permanent excitation	
Operating mode	Duty type S2-30 min Duty type S3-50 % 60 min	
Insulation class	B	
Motor protection	Thermosensor Current limiting	
Limit switching	Magnetic absolute encoder Electronic shutdown	
Torque switching	Infinitely adjustable electronically, blocking and breakaway torque individually	
Position feedback	Magnetic absolute encoder via digital interface	
Mechanical position indicator	No	Continuous motion work, OPEN/CLOSED end positions can be set
Manual operation	Via 27/24 standard square-end on top of actuator	
Connection types	F10 B3 according to EN ISO 5210, in ground installation "Berliner Kappe®"	
Motor compartment heating	20 Watt (with grid connection)	40 Watt (with grid connection)

> Power supply

Feature	Standard	Optional
Power supply	85-264 V AC, 45-63 Hz, nominal current 4.5-2.5 A	3S Battery Pack 1400, energy harvest controller 9-28 V DC
Protection	8A gR	Internal when battery-operated
Power input	< 500 W max	
Electrical connection	Plug connection IP68	
Overvoltage protection	EN61000-4-5 Class 3, Galvanically separated, test voltage 2500 V AC 1min (grid supply)	



> Control

Feature	Standard	Optional
Digital interface for commands and actuator feedback	Profibus or Modbus (RS485) (grid-connected)	x-active (mobile radio/2G/3G), Field bus fiber optic interface
Actuator configuration/ actuator analysis	Digital PC service interface (RS232)	Digital PC service interface (USB), WiFi connector
Local control unit		connection via service interface, OPEN, STOP, CLOSED keys, 5 signal lamps, authorisation key switch, PC service interface
Sensor data tracking/ transmission	Internal motor and electronics temperature, humidity inside actuator casing	External sensor data (e.g. pressure or temperature)
Speed control	Infinitely adjustable speed profile	
Torque control	Infinitely adjustable stop position and torque breakaway	
Type of seating	Position stop or torque switch OPEN and/or CLOSED	
Data logging	Status data of actuator/valve	External sensor data; sensor data-controlled operation of valve

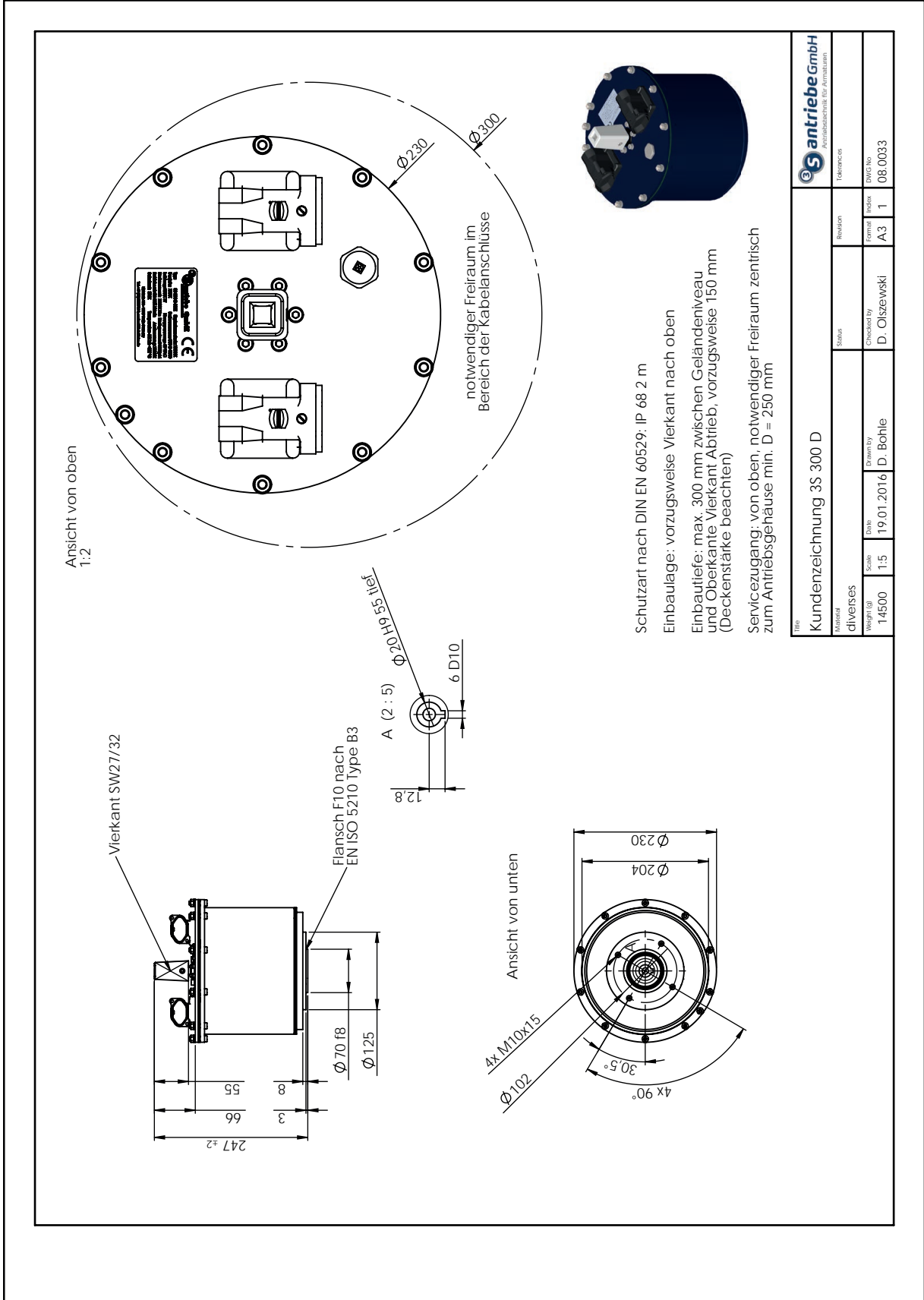
> Interfaces x-active server

Feature	Standard	Optional
Web interface	Access via secure connection on private server	Access via secure connection on hosted server
SOAP interface	Access via secure connection on private server	Access via secure connection on hosted server
OPC server	OPC server on private hardware	OPC server on server hosted server, connection via OPC tunnel

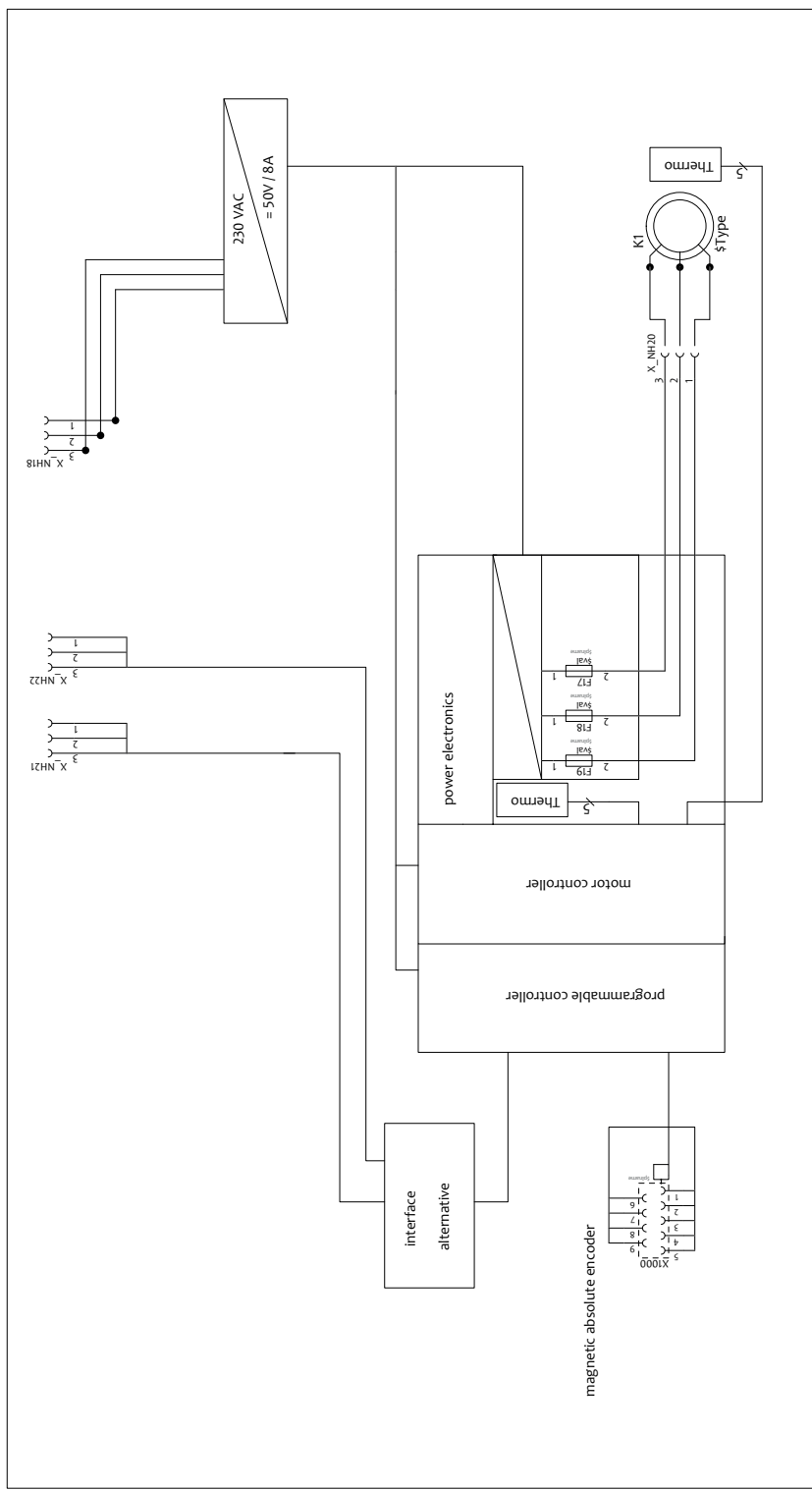
> Operational conditions

Feature	Standard	Optional
Installation type	Indoor/outdoor Earth placement	Electric decoupling
Mounting position	Vertical/upright	
Protection class	IP68 Atex II 3G Ex nR IIC T6 Gc	
Protection from corrosion	Actuator casing of stainless steel (V2A), powder-coated	Actuator casing of stainless steel (V4A), powder-coated
Ambient temperature	-20 bis + 50 °C	-40 bis +50 °C (grid-connected)

> Installation dimensions



> Schematics



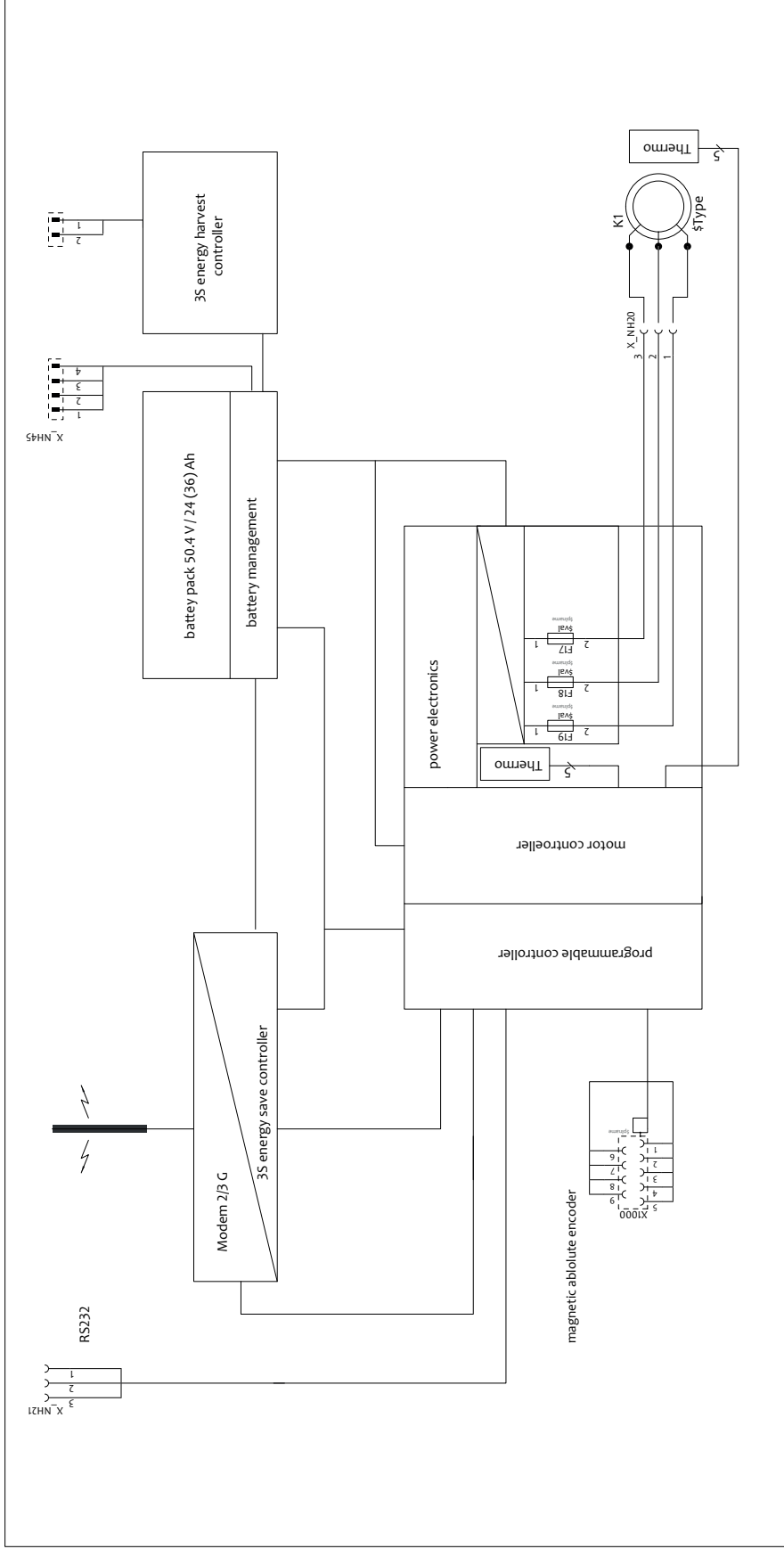
3S - Antriebe GmbH	Project: 3S Antrieb
	Connections grid supply
Beauftragter: Datum:	File: Element:
10mm	Sheet 1 o f 2
3S-Antriebe GmbH ... 12109 Berlin ... Ulisseinstr. 108 ... Tel. 0 30 2 700 7 64 10	

charging interface

3S Charger 230 VAC energy harvester 9.28 VDC (PV, micro turbine etc)

xactive interface

PC service interface



3S - Antriebe GmbH	Project: 3S Antrieb	connections battery supply
Bearbeiter: Datum:	File: Element:	
3S-Antriebe GmbH - 12109 Berlin - Ullsteinstr. 108	- Tel. 0 30-70077 64-10	



3S Antriebe GmbH
Schichauweg 52
12307 Berlin

Tel +49(30)7007764-0
Fax +49(30)7007764-20
info@3S-Antriebe.de

www.3S-Antriebe.com
www.blog.3S-antriebe.com